

Tubex Nature Standard™

BIODEGRADABLE
TREE PROTECTION

OUR MOST POPULAR 100% BIODEGRADABLE TREE SHELTERS FOR ENHANCED GROWTH AND PROTECTION

Tubex Nature Standard™ is our most popular twin-walled 100% biodegradable shelter protecting growing trees from wildlife damage whilst supporting growth with an estimated service life of 3 years, designed for hard-to-reach areas where collection isn't possible.

Incorporating all the proven Tubex features tried and tested for decades, Nature Standard shelters increase the chances of survival and healthy growth through the early stages of the tree's life, allowing planting of smaller, cheaper trees. They provide a microclimate which aids strong root and stem growth, while offering protection against animal browsing, herbicides and weeding, and fully biodegrades both in and on top of soil at an ambient temperature.



BENEFITS

- Biodegradable in situ** - Made from bio-based materials derived from starch, plant and vegetable sources. Externally tested against ISO 17556 to show soil biodegradability and independently tested to show biodegradation on soil at ambient temperatures. Over time, they will breakdown into water and CO2 through a microbiological process.
- Non-toxic** - Externally tested against OECD 207 & 208.
- Additional fixing holes** - to secure extra ties on extremely exposed sites or during subsequent beat-up operations ensuring a strong connection to the supporting stake.
- Proven performance** - Robust twin-walled construction tested to perform with an estimated 3 years service life, offering protection against browsing animals, whilst providing excellent light transmission to facilitate growth.
- Easy installation** - Includes pre-fitted releasable standard or biodegradable* ties.

* for this option the whole shelter system is 100% biodegradable; wooden stake, shelter & biotie

PRODUCT SPECIFICATIONS

Dimensions	Standard 0.6	Standard 0.75	Standard 1.2	Standard Plus 1.5
Height (m)	0.6	0.75	1.2	1.5
Diameter (mm)	73, 81, 91, 100.5, 110	73, 81, 91, 100.5, 110	73, 81, 91, 100.5, 110	81.5, 91, 100.5, 110, 119
Av. Weight per Tube (g)	81,90, 101, 112, 122	96, 111, 124, 137, 155	162, 180, 202, 224, 245	220, 254, 280, 307, 343
Number of Ties	1	2	2	3
Tie Location from Bottom (mm)	450	195, 500	195, 935	250, 685, 1125
Material				
Tube	Bio-based Blend			
Colour	Light Brown			
Service Life*	3 Years			
Manufacturing Tolerance	-2.5cm			
Recommended Support	25mm Square Stake 25% Longer than Shelter			
Packaging				
Tubes per Nest	5			
Tubes per Bundle	60			
Bag, Box or Strap Banded	Bag	Strap Banded		

*Product longevity is dependent on site and weather conditions and cannot be guaranteed.

TUBEX NATURE™ products are designed to naturally biodegrade over time. Due to this property, Tubex advise Nature products are not used near roads, pathways or locations where disintegration fragments could pose safety risks. For such applications, we recommend our [Recyclable Range](#). TUBEX® accepts no liability for use or installation of the products in unsuitable environments.

Twin wall

Minimises weight while maximising strength



Reinforcing Rods

To ensure zip ties cannot be ripped out



Pre-fitted releasable zip ties

For easy installation and maintenance



Flared Top

Minimises stem abrasion



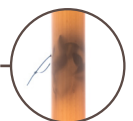
Three sets of holes available

Safer and stronger fit on the stake



Improved light transmission

Accelerates growth by creating a microclimate



How else can we help? **Get in touch with us at:**

+44 (0) 168 5888 035 tubexsales@magnera.com www.tubex.com

As part of its continued improvement process Tubex® reserves the right to change the properties listed on this data sheet without prior notice. Tubex® is a trademark of Magnera Corporation or one of its affiliates.

TUBEX®
A Magnera Brand