

# Rainbow Bio Vole Guard Introduction



Made in the UK



**Rainbow Bio Vole Guards are made from biodegradable materials and are suitable for protecting young trees from damage caused around the base of stems by voles/mice and/or the careless use of a strimmer.**

Every year thousands of trees are killed by damage caused by voles and mice, or because of the accidental damage caused by a strimmer.

The Bio Vole Guard can help mitigate this, particularly in overgrown conditions, where voles are found.

The added benefit of the coiled, wrap around design means they expand with the growth of the tree.

Made solely from bio-degradable polymers and additives, they are certified as being 100% bio-based and compostable.

The Bio Vole Guard helps protect young hedging and tree plants without contaminating the soil or leaving toxic residues behind when degraded.

## Benefits

- **Non-toxic, bio-based materials**, meaning no toxic residues at end of life.
- **Protects** from browsing voles/mice
- **Easy installation** & expands with the tree

## Installation

- Separate from nest of 3 guards, gently open and wrap around the base of the tree.
- Push the guard into the soil slightly to create an effective barrier against voles and mice damage. See installation diagrams (pg 3) for more information.
- *Note – no support is required if installed correctly, however should you wish to provide your young tree plant & Bio Vole Guard with extra support then we recommend using a cane.*

## Specifications:

Dimensions
Height m*
Diameter mm
Number of cable ties
Average weight/tube g
Packaging
Nest
Bundle
Baq or box
Material
Tube
Cable tie
Tube colour

Bio Vole Guard
0.2
38mm
Not required
10
Bio Vole Guard
3
450
Box
Bio Vole Guard
Bio based (plant based) blend
na
Green Tint

Service Life
Service life (tube)
End of life
Recommended support

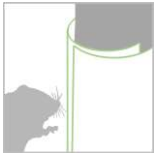
Bio Vole Guard
Estimated 3-5 years
Leave in situ to biodegrade or remove and industrially compost.
If required (for very young plants) - cane

\* Manufacturing tolerance of wrap height +/- 25mm.

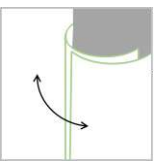
\*\* Product longevity is dependent on site and weather conditions and cannot be guaranteed.

# Rainbow Bio Vole Guard Features & Benefits

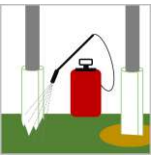
## Plant Welfare



**Animal protection**  
Protects young trees against damage from voles & mice.



**Coiled design**  
Expands with the growth of the tree.



**Herbicide protection**  
Helps protect the tree from (carefully applied) herbicide spray.



**Strimmer protection**  
Protects from accidental strimmer damage.



**Non-toxic**  
Unlike oil-based plastics, Bio Vole guards degrade into water, CO<sub>2</sub> and biomass remains (see Fig A).

## Material



**Plant-based materials**  
Especially useful in overgrown areas where voles are found.



**Service life**  
Designed to offer 3-5 years of service life depending on conditions\*.



**Lower carbon footprint**  
Bio Vole Guards have a carbon footprint of up to 5x lower than oil-based plastics.

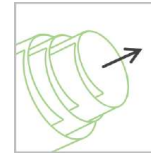


**No competition with food sources**  
Made from off-cuts and post-industrial waste meaning no conflict with food sources.

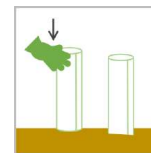
## Installation



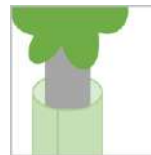
**Packaged in boxes**  
450 Bio Vole Guards /box, for ease of transport and handling.



**Nested**  
For ease of movement around site (3/nest).



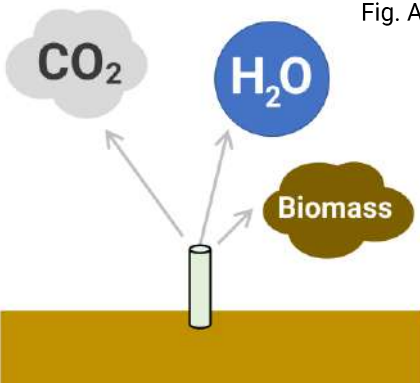
**Longitudinally rigid**  
Meaning the vole guard can be pushed into the soil, discouraging burrowing animals.



**Natural colour**  
Blends into background at base of tree.



Fig. A



\*Product longevity is dependent on site and weather conditions and cannot be guaranteed.

# Rainbow Bio Vole Guard Installation

## Installation

### For young established trees (no cane support)

1. Remove guard from its nest of 3 guards (fig 1).
2. Gently open and wrap around the base of young tree (fig 2), allowing the coil to wrap back over on itself (fig 3).
3. Push guard 1cm to 2cm into the soil to create a barrier for voles and mice, and to help hold the guard in place (fig 4).
4. At the end of its useful life (typically 3+ years) either leave in situ to biodegrade over time or remove the Bio Vole Guard for industrial composting to speed the process up.



Fig 1

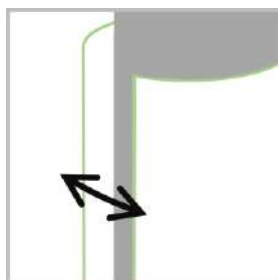


Fig 2

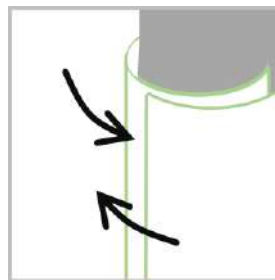


Fig 3

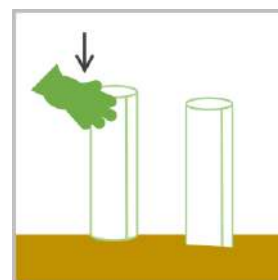


Fig 4

### For younger plants that may require support (with cane)

1. Having planted your plant, gently push a cane into the ground next to it (see fig 5), about 2cm away from base of stem.
2. Remove guard from its nest of 3 guards.
3. Open the guard and wrap around **both** the cane and the plant, allowing the coil to wrap back over on itself.
4. Push guard 1cm to 2cm into the soil to create a barrier for voles and mice, and to help hold the guard in place.
5. At the end of its useful life (typically 3+ years) either leave in situ to biodegrade over time or remove the Bio Vole Guard for industrial composting to speed the process up.

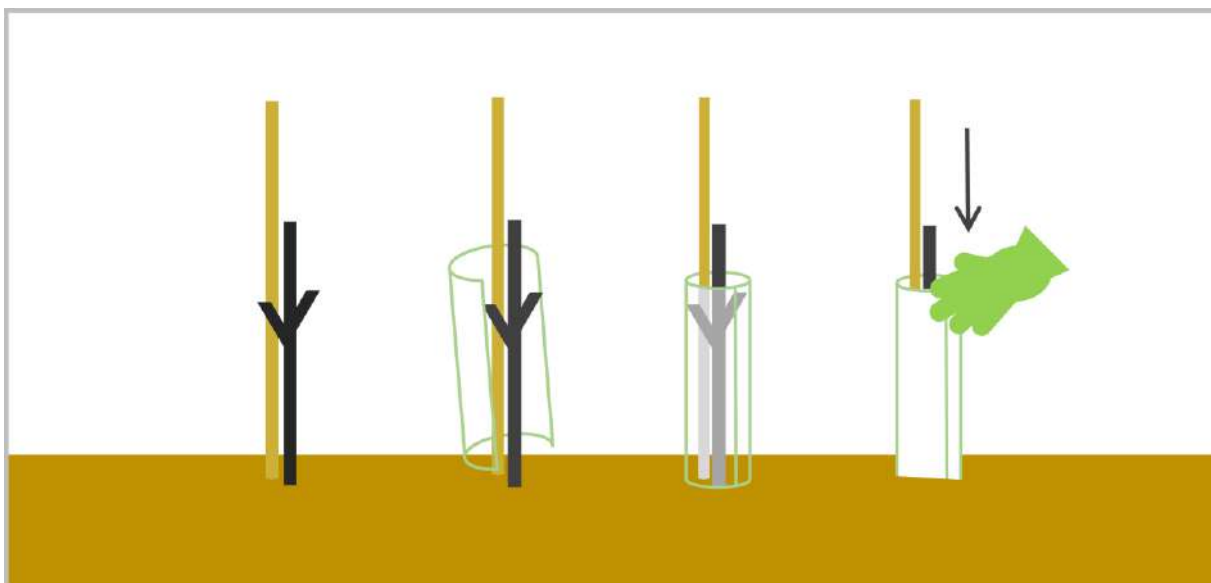


Fig 5